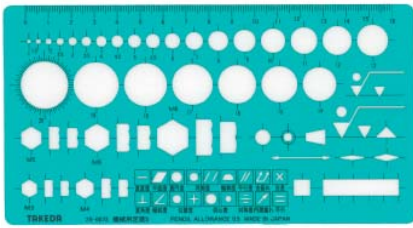


機械用定規 S 29-0072

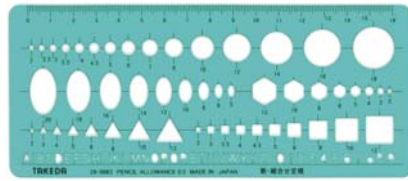
径1~25mm 板寸法:96x179x1.0mm



税抜価格 ¥ 1,100

新・組合せ定規 29-0083

板寸法:176x77x0.75mm



税抜価格 ¥ 990

円弧定規 29-0105

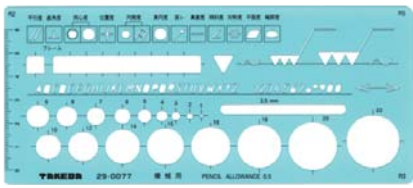
半径1~500mm 板寸法:112x235x1.0mm



税抜価格 ¥ 1,600

機械用 29-0077

板寸法:76x177x0.6mm



税抜価格 ¥ 1,000

円弧定規 29-0102

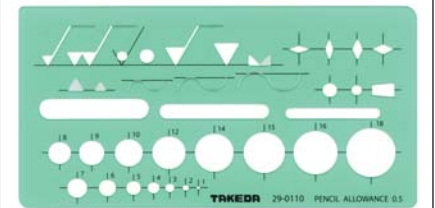
半径1~500mm 板寸法:125x225x1.0mm



税抜価格 ¥ 1,150

仕上げ記号定規 29-0110

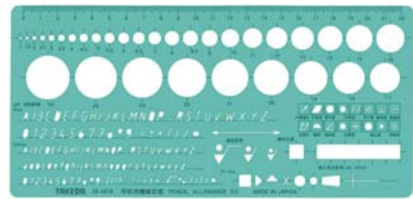
板寸法:73x148x0.4mm



税抜価格 ¥ 290

機械用(学校向け) 29-0078

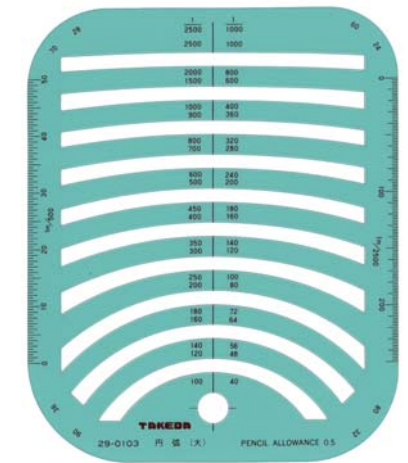
板寸法:112x235x1mm



税抜価格 ¥ 1,650

円弧定規 29-0103

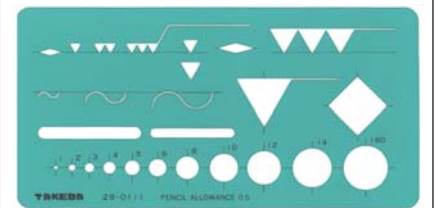
1/1000,1/2500縮尺目盛、土木設計用
板寸法:155x135x1.0mm



税抜価格 ¥ 1,100

仕上げ記号定規 29-0111

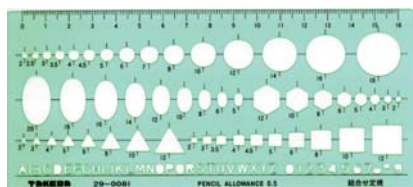
板寸法:75x150x0.75mm



税抜価格 ¥ 470

組合せ定規 29-0081

板寸法:176x77x0.75mm



税抜価格 ¥ 800

円弧定規(小) 29-0104

半径10~90mm 板寸法:170x180x1.0mm



税抜価格 ¥ 1,550

機械仕上げ記号定規 29-0116

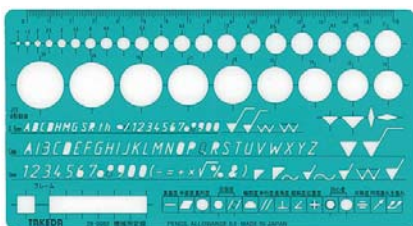
板寸法:75x176x1.0mm



税抜価格 ¥ 1,450

機械用定規 29-0082

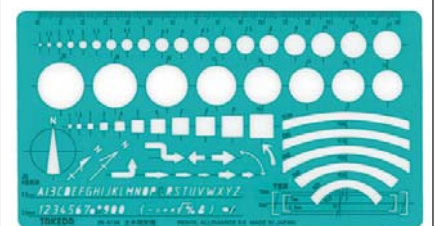
円1~20mm 板寸法:96x179x1.0mm



税抜価格 ¥ 1,200

土木用定規 29-0134

円1~20mm 板寸法:95x179x1.0mm



税抜価格 ¥ 1,200